

JVC

SCHEMATIC DIAGRAMS

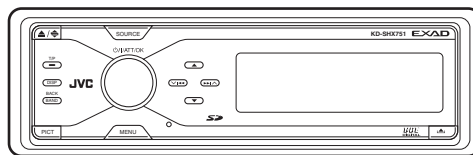
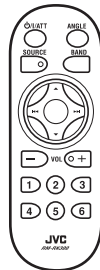
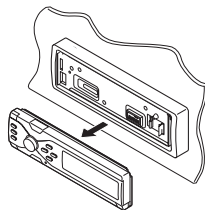
CD/SD RECEIVER

KD-SHX751

CD-ROM No.SML200504

Area suffix

E ----- Southern Europe
EX ----- Northern Europe
EY ----- Eastern Europe
EU ----- Turkey



EXAD

SD

PICT


R-D-S

**COMPACT
disc
DIGITAL AUDIO
TEXT**

**BBE
DIGITAL**

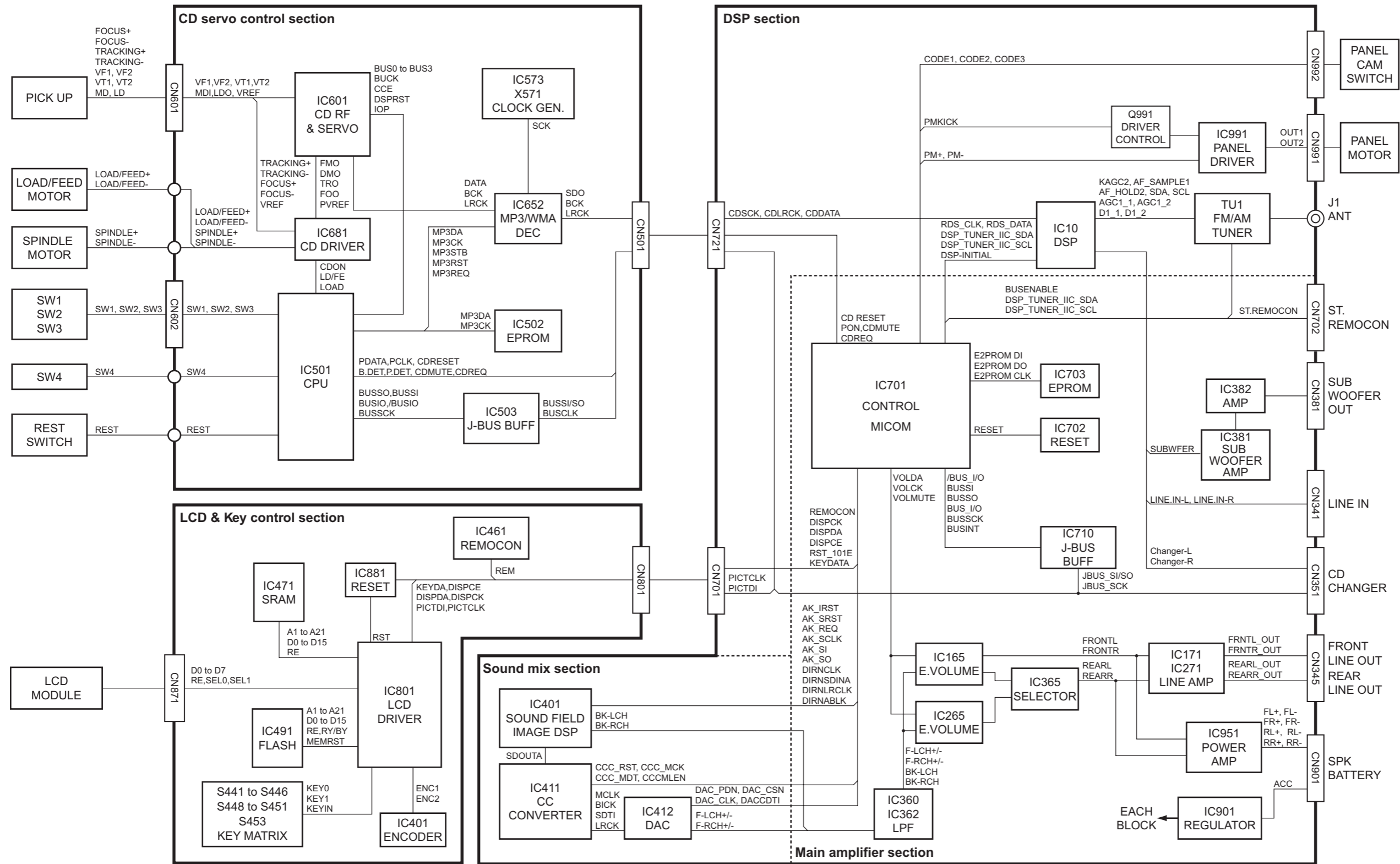
Block diagram	2-1
Standard schematic diagrams	2-2
Printed circuit boards	2-7 to 9

Safety precaution

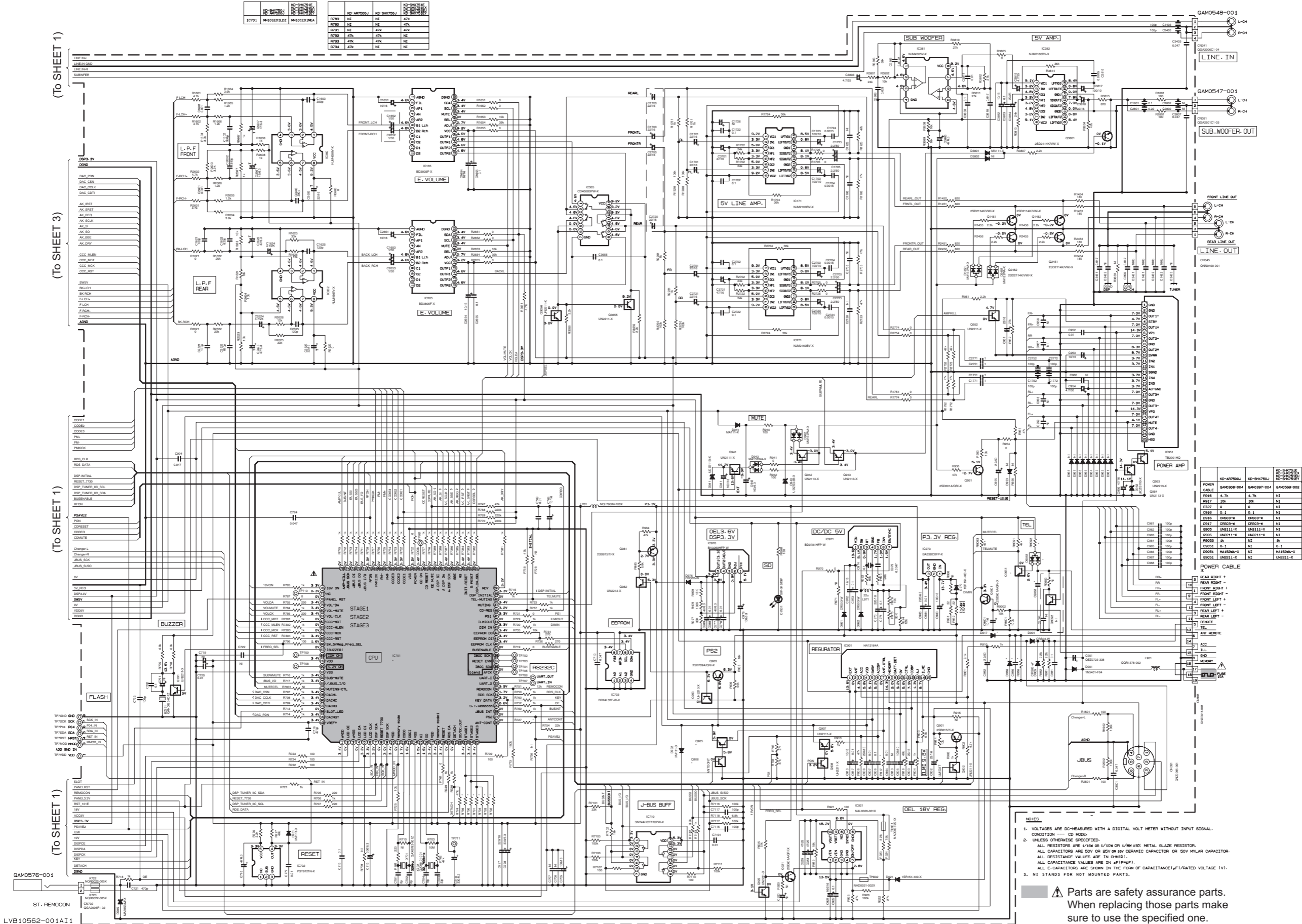
 **CAUTION** Burrs formed during molding may be left over on some parts of the chassis. Therefore, pay attention to such burrs in the case of performing repair of this system.

 **CAUTION** Please use enough caution not to see the beam directly or touch it in case of an adjustment or operation check.

Block diagram



Main section



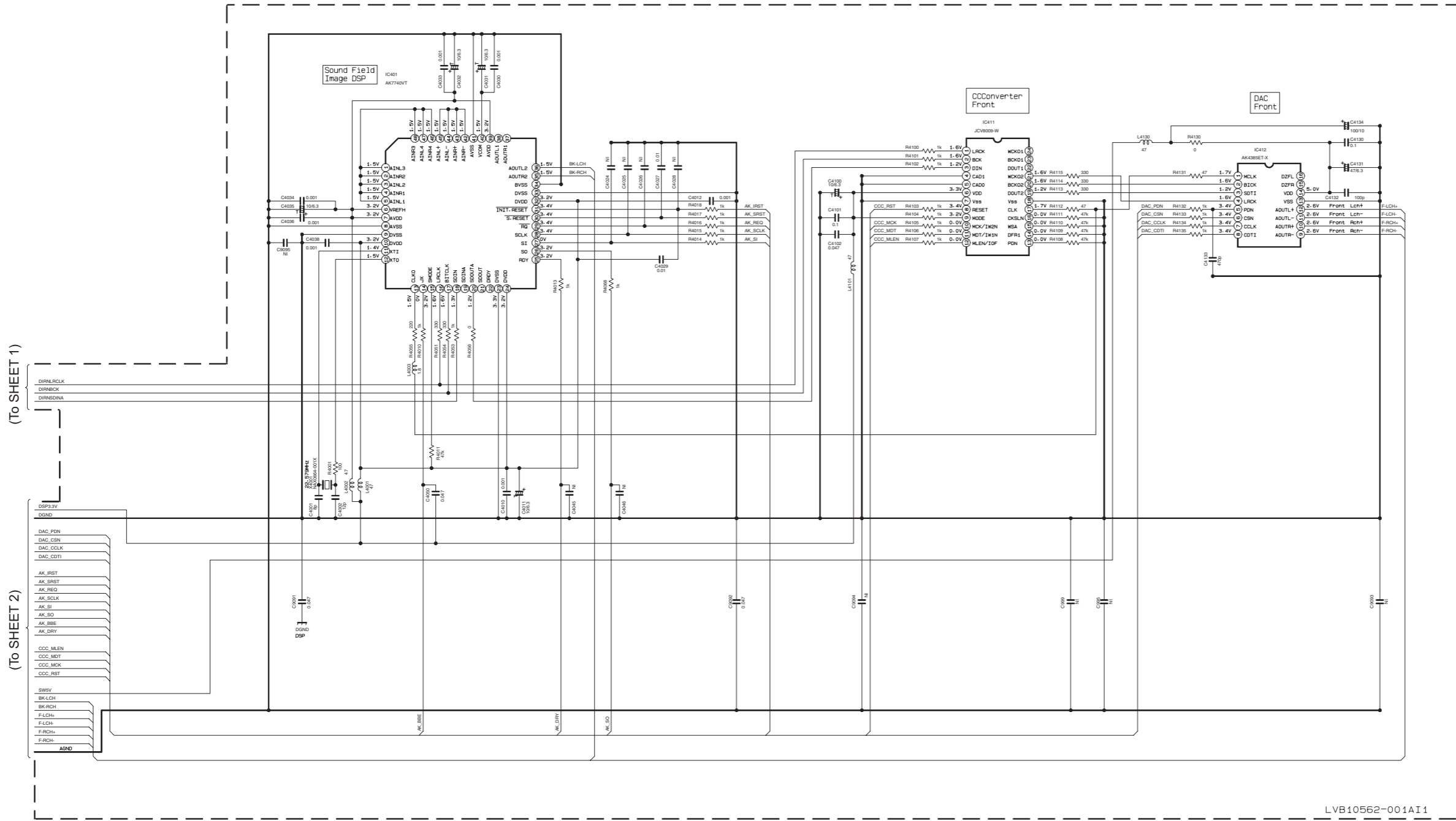
NO.	QTY	REF.	DESCRIPTION	NO.	QTY	REF.	DESCRIPTION
R780	1	47K	RES	R781	1	47K	RES
R782	1	47K	RES	R783	1	47K	RES
R784	1	47K	RES	R785	1	47K	RES

NO.	QTY	REF.	DESCRIPTION	NO.	QTY	REF.	DESCRIPTION
IC100	1	IC100	CPU	IC101	1	IC101	DC/DC 5V
IC102	1	IC102	3.3V REG.	IC103	1	IC103	1.8V REG.
IC104	1	IC104	3.0V REG.	IC105	1	IC105	5V LINE AMP
IC106	1	IC106	5V LINE AMP	IC107	1	IC107	SUB WOOFER AMP
IC108	1	IC108	EEPROM	IC109	1	IC109	J-BUS BUFF
IC110	1	IC110	RESET	IC111	1	IC111	POWER AMP
IC112	1	IC112	TEL	IC113	1	IC113	POWER CABLE

- NOTES
- VOLTAGES ARE DC-MEASURED WITH A DIGITAL VOLT METER WITHOUT INPUT SIGNAL. CONDITION — CD MODE.
 - UNLESS OTHERWISE SPECIFIED, ALL RESISTORS ARE 1/16W OR 1/8W 5% METAL GLAZE RESISTOR. ALL CAPACITORS ARE 50V OR 10V CERAMIC CAPACITOR OR 50V MYLAR CAPACITOR. ALL RESISTANCE VALUES ARE IN OHMS (Ω).
 - ALL CAPACITANCE VALUES ARE IN pF (pF).
 - ALL E-CAPACITORS ARE SHOWN IN THE FORM OF CAPACITANCE (μF)/RATED VOLTAGE (V).
 - N1 STANDS FOR NOT MOUNTED PARTS.

⚠ Parts are safety assurance parts. When replacing those parts make sure to use the specified one.

■ Sound mix section

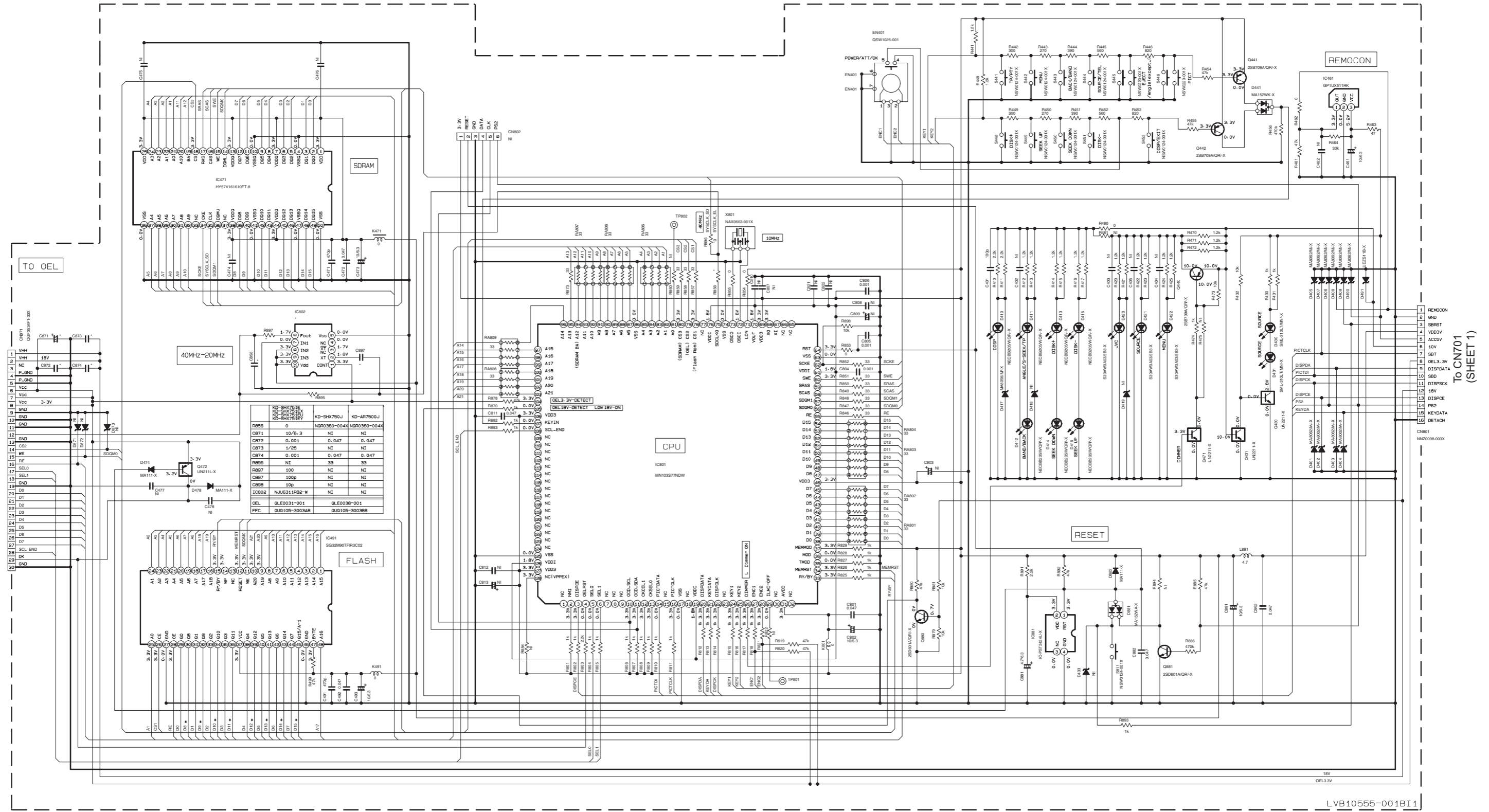


LVB10562-001A11

		UN211L
		UN2211
		UN2213
		UN2111
		UN2214

- NOTES**
- VOLTAGES ARE DC-MEASURED WITH A DIGITAL VOLT METER WITHOUT INPUT SIGNAL. CONDITION --- CD MODE.
 - UNLESS OTHERWISE SPECIFIED:
ALL RESISTORS ARE 1/16W OR 1/10W OR 1/8W ±5% METAL GLAZE RESISTOR.
ALL CAPACITORS ARE 50V OR 25V OR 16V CERAMIC CAPACITOR OR 50V NYLAR CAPACITOR.
ALL RESISTANCE VALUES ARE IN OHM(Ω).
ALL CAPACITANCE VALUES ARE IN pF(pF).
ALL E-CAPACITORS ARE SHOWN IN THE FORM OF CAPACITANCE/μF/RATED VOLTAGE (V).
 - NI STANDS FOR NOT MOUNTED PARTS.

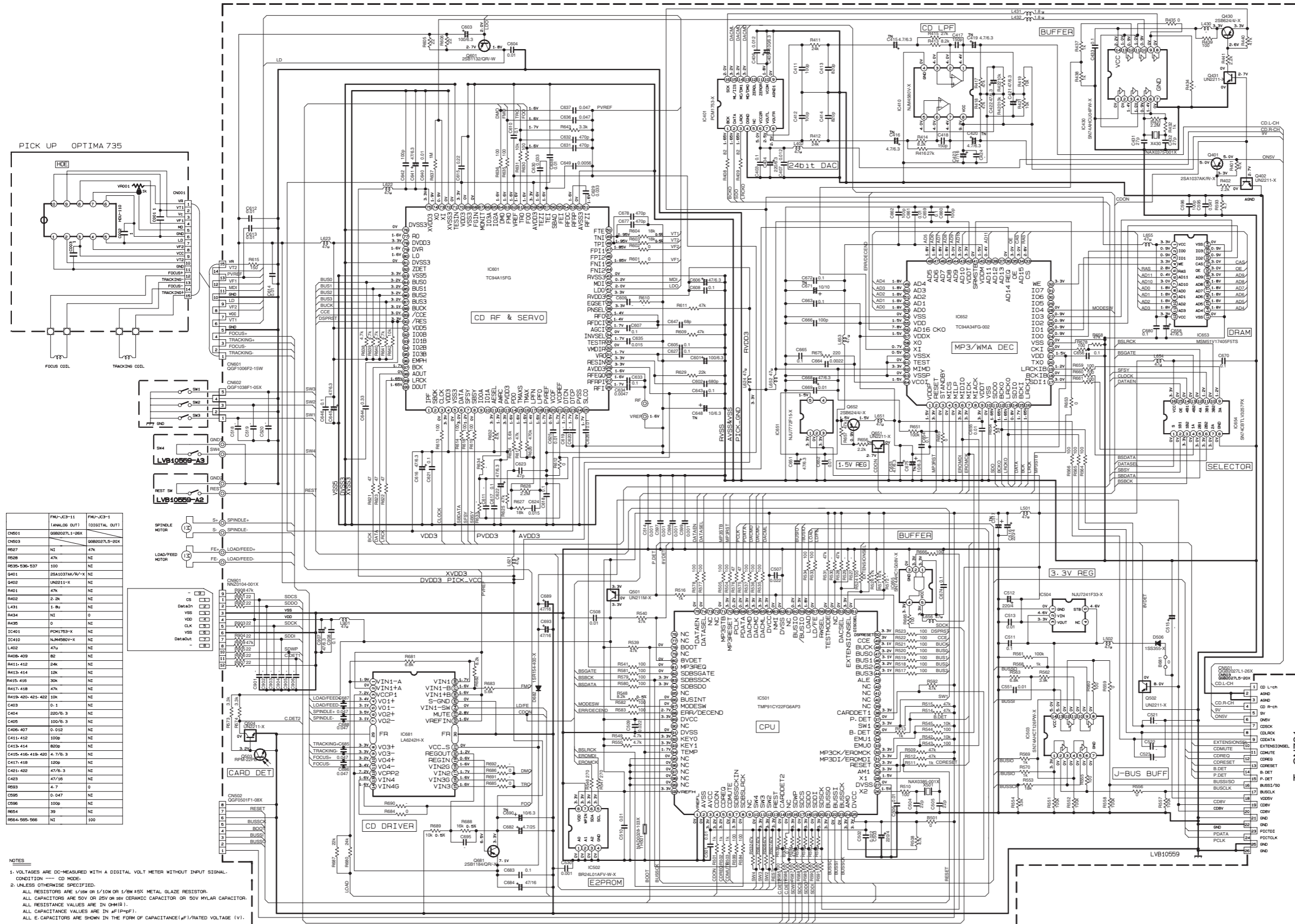
LCD & Key control section



NOTES

1. VOLTAGES ARE DC-MEASURED WITH A DIGITAL VOLT METER WITHOUT INPUT SIGNAL. CONDITION --- CD MODE.
2. UNLESS OTHERWISE SPECIFIED. ALL RESISTORS ARE 1/8W OR 1/10W OR 1/8W ±5% METAL GLAZE RESISTOR. ALL CAPACITORS ARE 50V OR 25V OR 16V CERAMIC CAPACITOR OR 50V MYLAR CAPACITOR. ALL RESISTANCE VALUES ARE IN Ω(M). ALL CAPACITANCE VALUES ARE IN pF(pF).
3. ALL E. CAPACITORS ARE SHOWN IN THE FORM OF CAPACITANCE(F)/RATED VOLTAGE (V).

CD servo control section

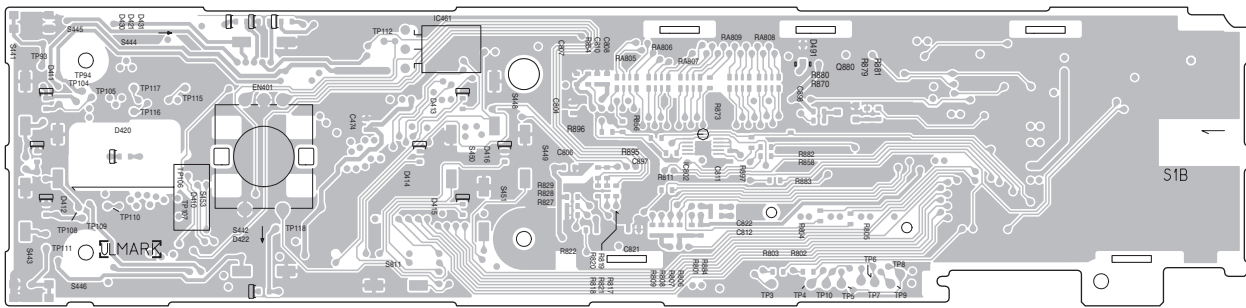


NOTES
 1. VOLTAGES ARE DC-MEASURED WITH A DIGITAL VOLT METER WITHOUT INPUT SIGNAL. CONDITION — CD MODE.
 2. UNLESS OTHERWISE SPECIFIED.
 ALL RESISTORS ARE 1/8W OR 1/10W OR 1/8W ±5% METAL GLAZE RESISTOR.
 ALL CAPACITORS ARE 50V OR 25V OR 16V CERAMIC CAPACITOR OR 50V MYLAR CAPACITOR.
 ALL RESISTANCE VALUES ARE IN OHMS (Ω).
 ALL CAPACITANCE VALUES ARE IN PICO (pF).
 ALL CAPACITORS ARE SHOWN IN THE FORM OF CAPACITANCE/(RATED VOLTAGE (V)).

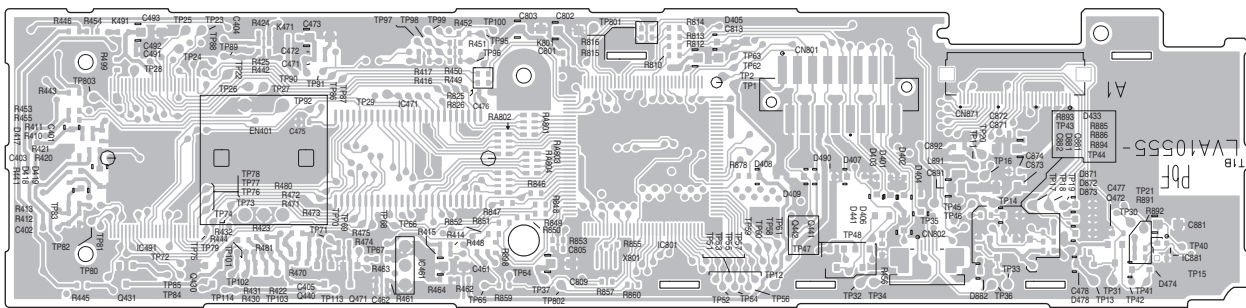
To CN721 (SHEET 1)

Switch board

Forward side



Reverse side



JVC

Victor Company of Japan, Limited

AV & MULTIMEDIA COMPANY CAR ELECTRONICS CATEGORY 10-1, 1chome, Ohwatari-machi, Maebashi-city, 371-8543, Japan

(No.MA163SCH)



Printed in Japan
VPT